

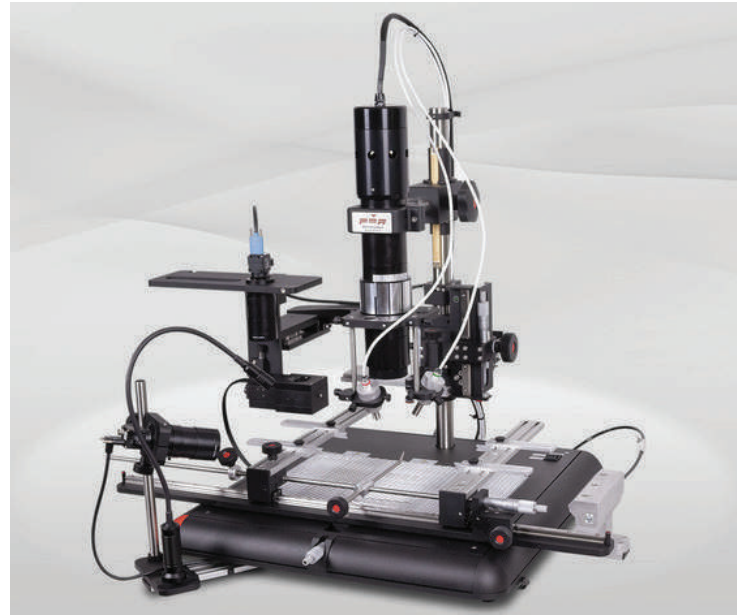
BGA/SMT REWORK STATIONS

PDR designs, manufactures, and distributes IR Rework Stations, Industrial X-Ray Inspections Systems, and IR Thermal Test equipment for the electronics component and PCB assembly industry.

PDR isn't just a brand, it's a revolution delivering unmatched control and effortless execution.

At the forefront of SMD rework technologies, PDR are working with many of the world's top names in:

- Electronic Manufacturing
- Defence
- Automotive
- Medical
- Research & Development



PDR IR-E3

- Advanced Focused IR component heating
- Quartz IR PCB preheating with up to 3 zones
- Split Beam prism system for simultaneous PCB/component viewing
- Precision Components Pick & Placement up to 10um
- Precision PCB handling
- Component Nest/Flux Application Facility
- Closed Loop Non-Contact Temperature Sensing
- Advanced Automatic Thermal Process Control
- Reflow Process Observation Camera
- PCB Forced Air Cooling

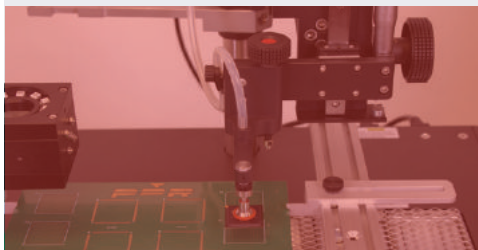
FOCUSED INFRARED

What you see you heat.
No collateral damage.
Instantaneous control.



PLACEMENT TECHNOLOGY

Our placement technology
allows every operator to achieve
the same standard of quality.



INTELLIGENT SOFTWARE

One profile to rework nearly all
applications.

